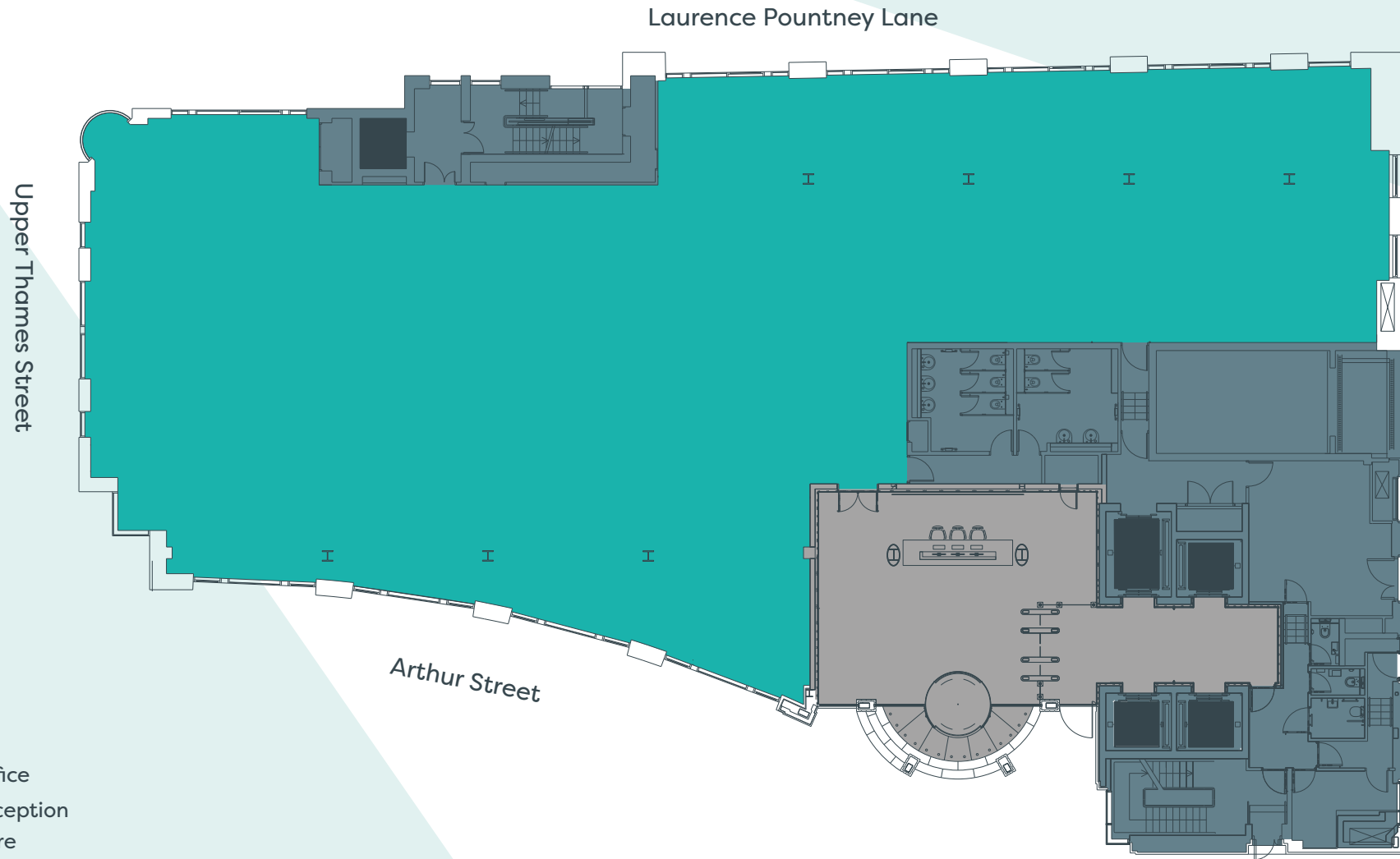


ARTHURST

floor plans

ground floor

7,543 sq ft (701 sq m)



key

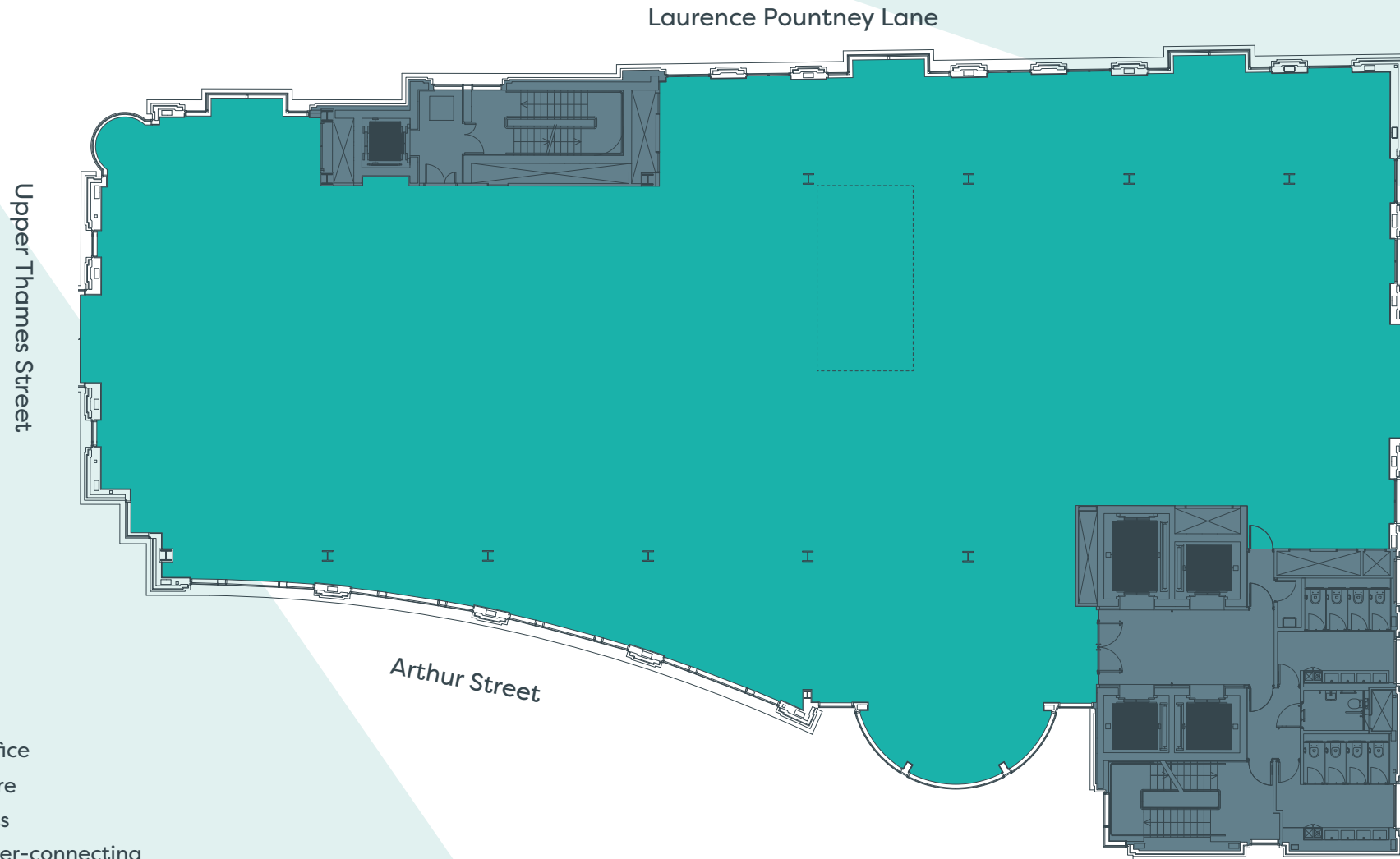
- office
- reception
- core
- lifts

Plan not to scale. For indicative purposes only



third floor

10,002 sq ft (929 sq m)



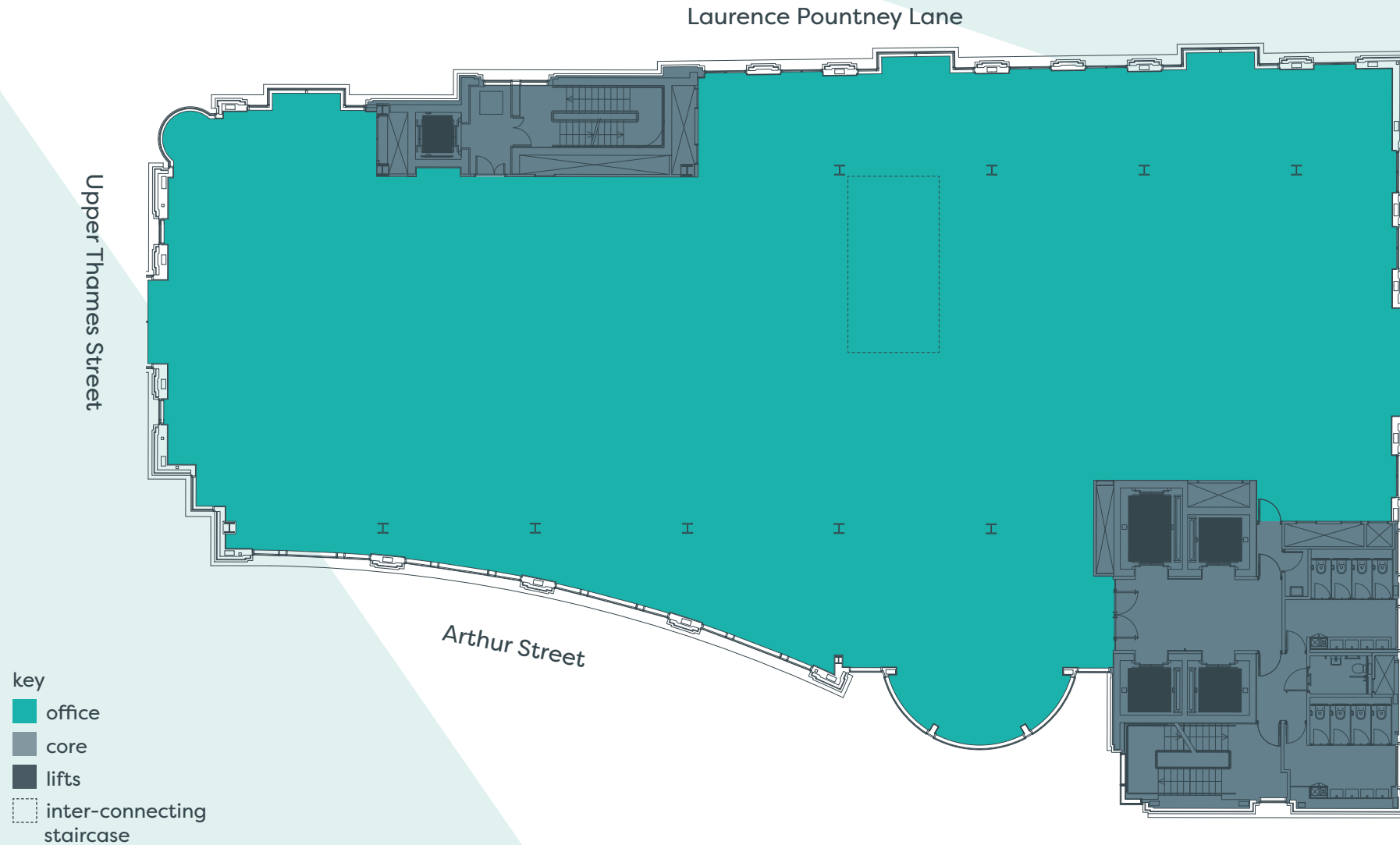
- key
- office
 - core
 - lifts
 - inter-connecting staircase

Plan not to scale. For indicative purposes only



fourth floor

10,205 sq ft (948 sq m)

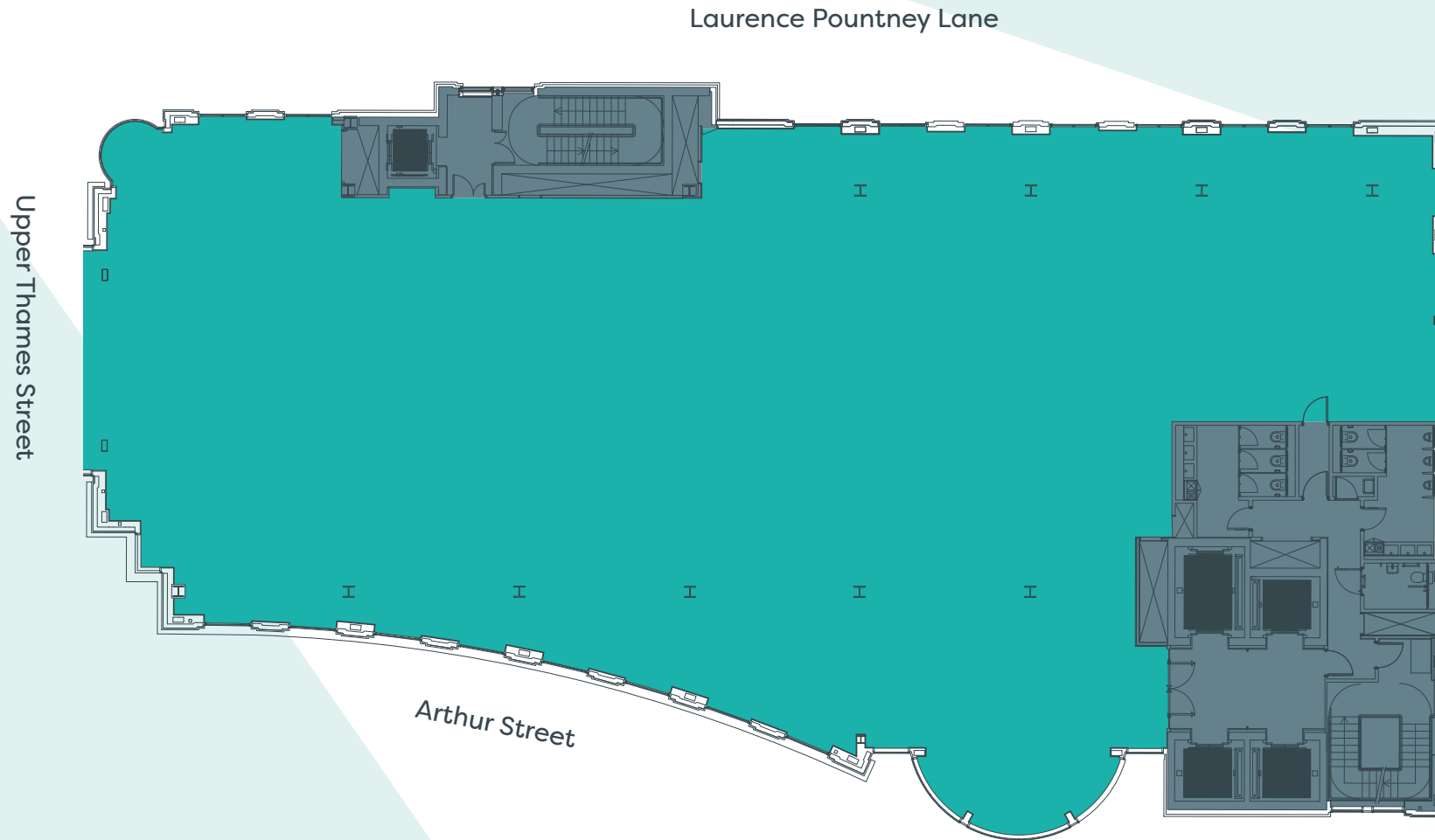


Plan not to scale. For indicative purposes only



eighth floor

8,723 sq ft (810 sq m)



- key
- office
 - core
 - lifts

Plan not to scale. For indicative purposes only



ARTHURST



Natalie Lelliott

e natalie@rubix.london
t 0207 205 2025
m 07776 388 567

Oliver Hawking

e oliver@rubix.london
t 0207 205 2025
m 07714 145 970



**BNP PARIBAS
REAL ESTATE**

Tim Williams

e tim.williams@realestate.bnpparibas
t 020 7338 4848
m 07717 576 894

Philip McKenna

e philip.mckenna@realestate.bnpparibas
t 020 7338 4847
m 07774 659 597